

# Installing the Driver of your Plotter- / Engraver

By installing your plotter / engraver software the driver for your device will be pre-installed. When the device is switched on after the software setup, Windows completes the installation of the driver installation automatically.

Start the plotter / engraver software by double clicking on the setup file (<Software name>\_setup\_<version>.exe).

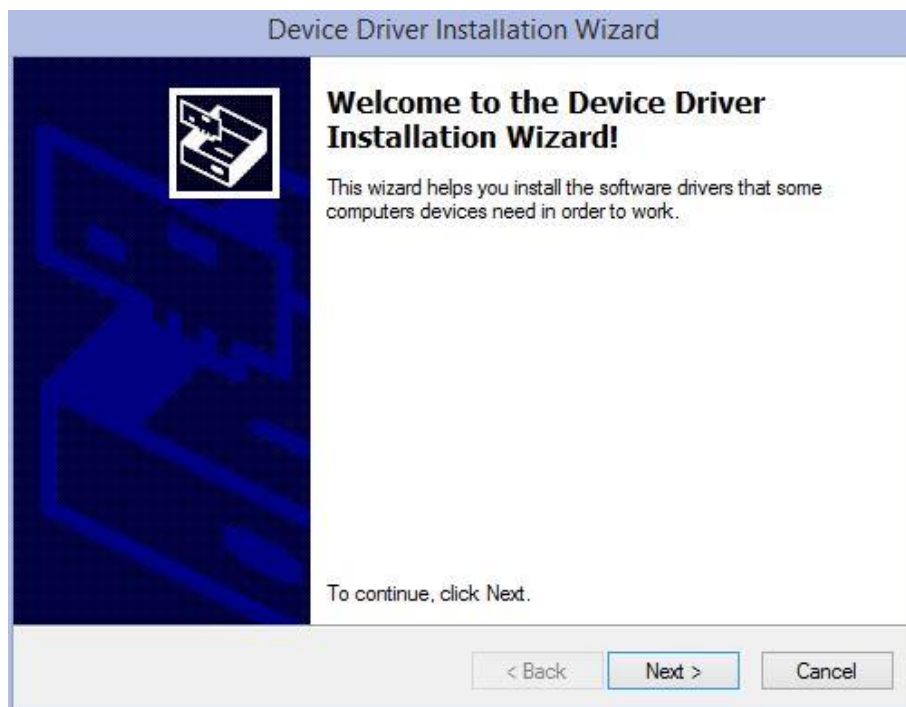
**Please leave your plotter / engraver switched off during the software setup.**

The driver is compatible with the windows versions 2000, XP, Vista, 7, 8, und 8.1.

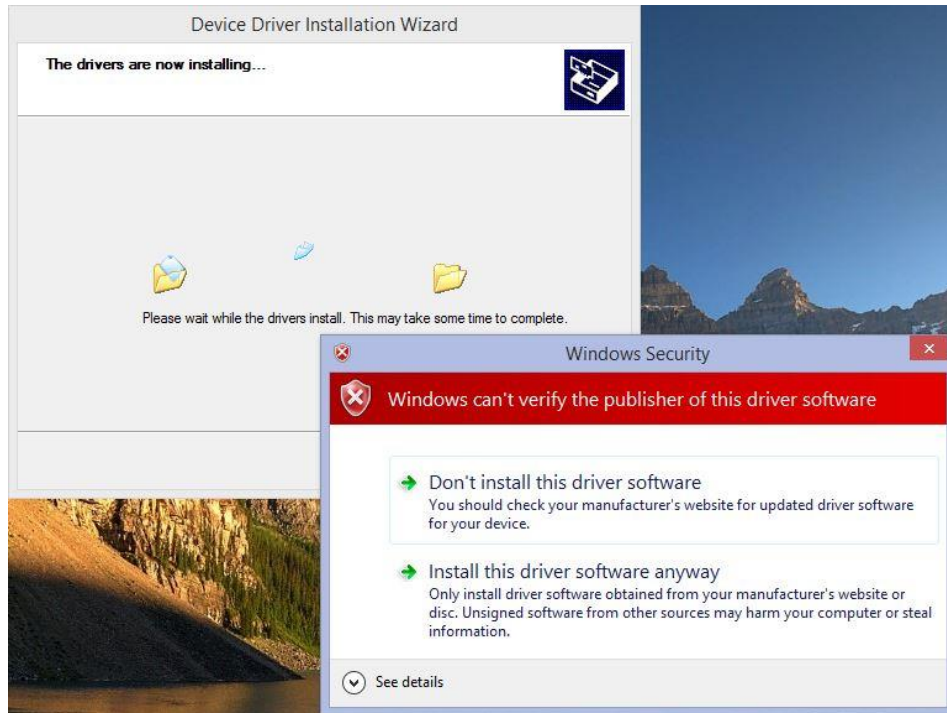
The installation process is described in detail.

## 1. Vista and Windows 7

1. During the installation of the plotter / engraver software a window “**Device Driver Installation Wizard**” appears. Click on “**Next**” to start the driver installation.



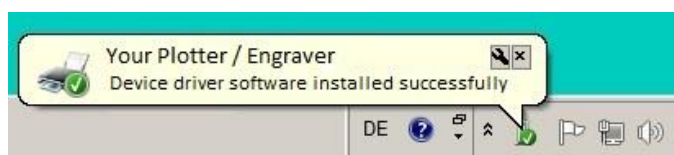
2. When the message: **“Windows can’t verify the publisher of this driver software”** appears, click on **“Install this driver software anyway”**.



3. Click on the **“Finish”** button to complete the driver pre-installing process.



4. On completion of the plotter / engraver software you are requested to restart the computer.
5. When the plotter / engraver is switched on the first time, Windows completes the driver installation automatically, after completion you will be notified by a taskbar bubble.

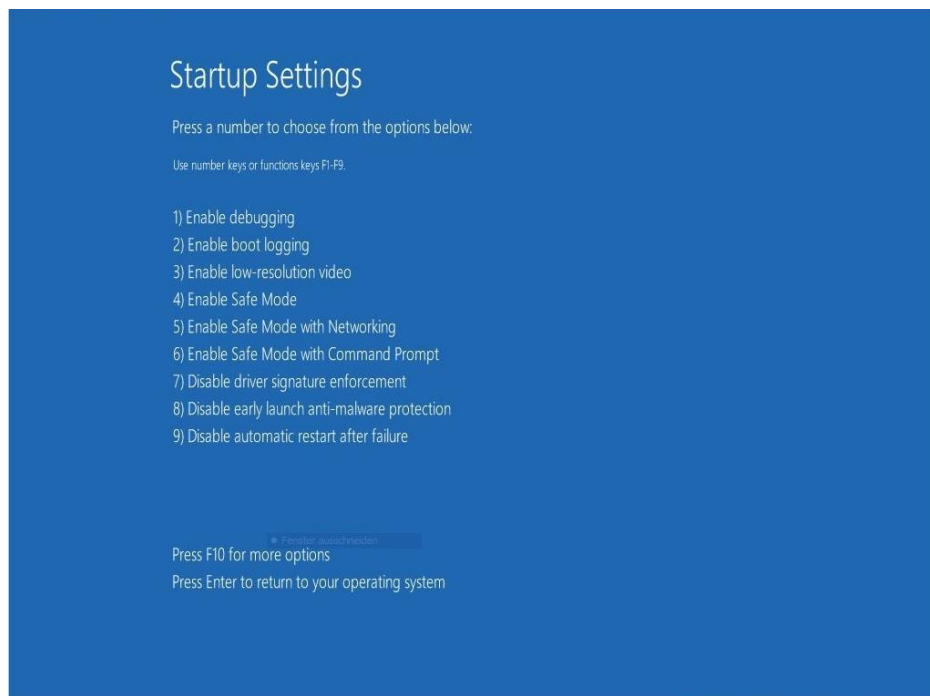


## 2. Windows 8 and Windows 8.1

1. During the installation of the plotter / engraver software the below window appears giving you instructions for installing the driver (described here in detail). Click **OK** to acknowledge.



2. At the end of the installation, you will be asked to restart your computer. Click on **OK** to restart.
3. Upon restart, the menu **“Startup Settings”** will appear.



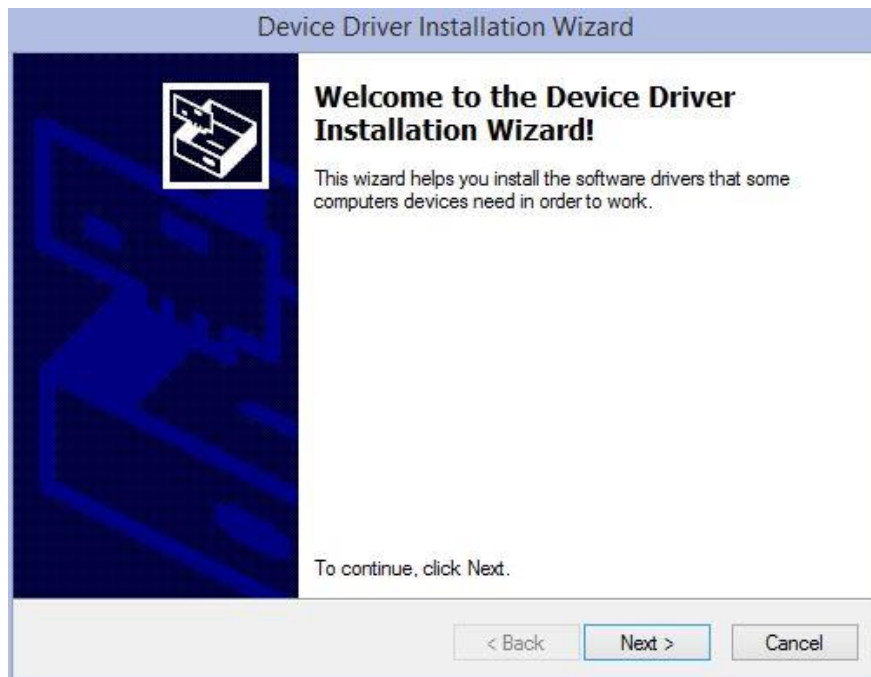
Choose the option:

**“7) Disable driver signature enforcement“**

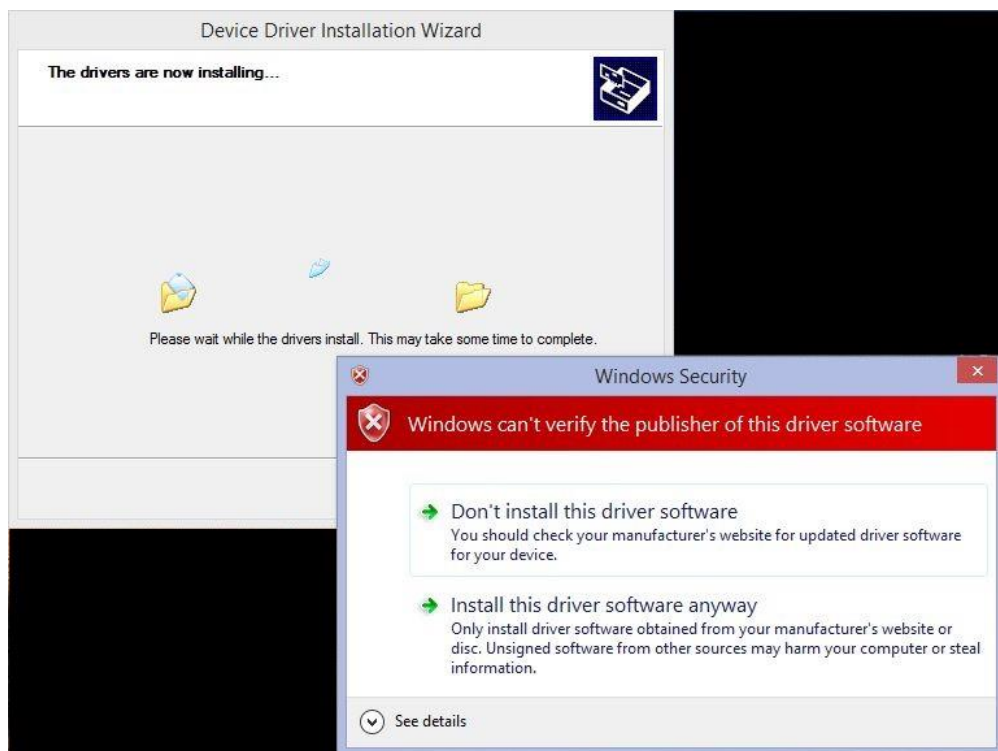
by pressing the **“7”** or **“F7”** key.

4. Sign in with your administrator account.

5. After signing in, the **“Device Driver Installation Wizard”** starts automatically. Click on **“Next”** to start the driver installation.



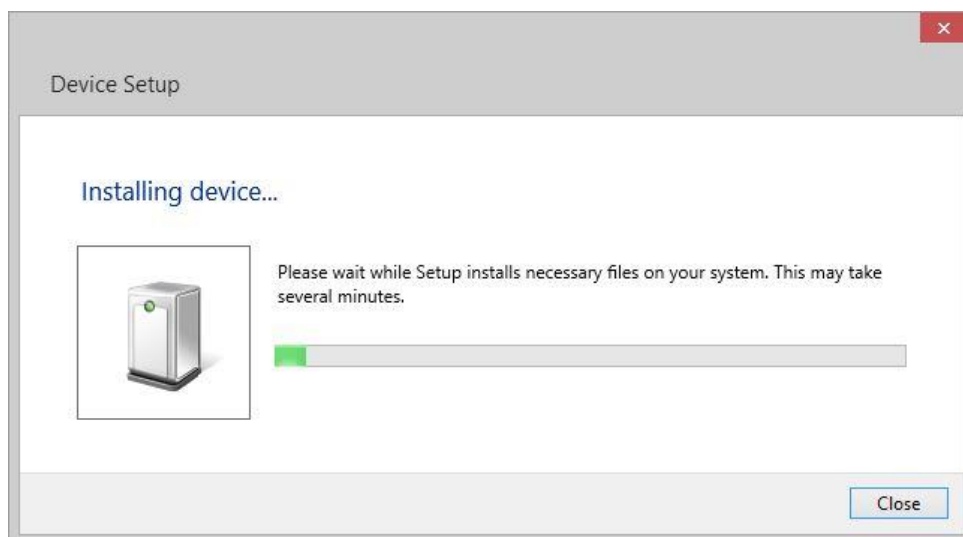
6. When the message: **“Windows can’t verify the publisher of this driver software”** appears, click on **“Install this driver software anyway”**.



7. Click on the **“Finish”** button to complete the driver pre-installing process.

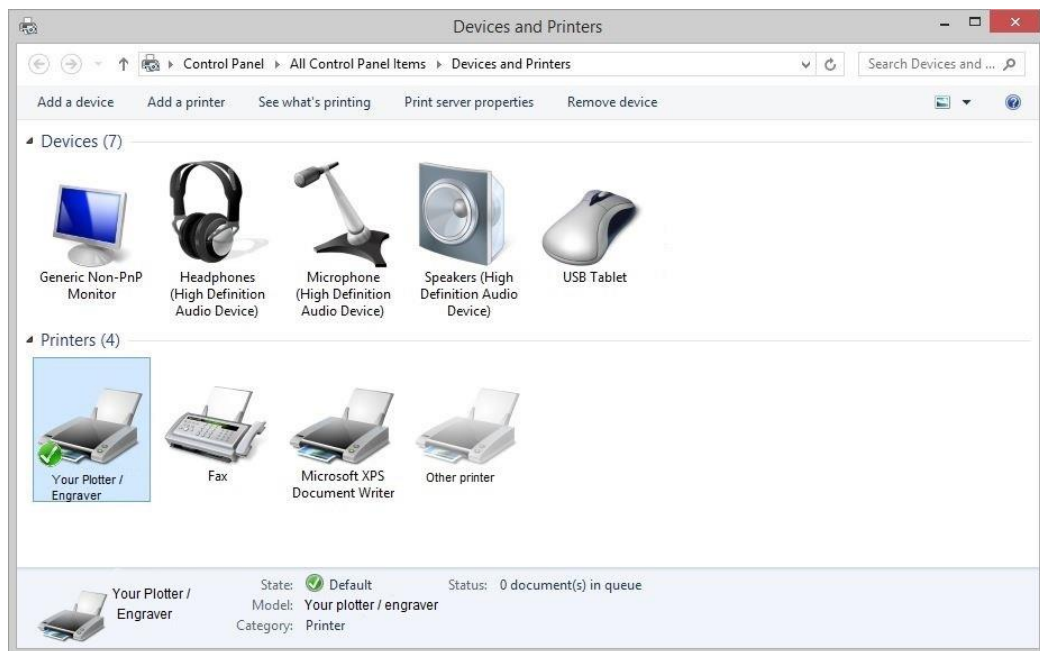


8. When the plotter / engraver is switched on the first time, Windows completes the driver installation automatically (this may take a few minutes). During this procedure you will see a symbol on the taskbar. If you click on it, you can see the progress of the installation.



The symbol and message window will disappear after the installation is completed.

9. If you want to check the success of the installation, please go to “**Devices and Printers**” under the control panel. There you will see your plotter / engraver in the list of printers.



### 3. Windows XP

1. During the installation of the plotter / engraver software the message “**The software you are installing... has not passed Windows Logo testing...**” appears. Click on “**Continue Anyway**”.



2. At the end of the installation, you will be asked to restart your computer. Click on **OK** to restart. Sign in with your administrator account.

3. Connect the plotter / engraver to your computer and switch on.

The “**Found New Hardware Wizard**” starts. When asked „**Can windows connect to Windows Update to search for the software?**”, choose “**No, not this time**”.



4. When asked “**What do you want the wizard to do?**” Choose “**Install the software automatically (Recommended)**”.



5. When the message “The software you are installing... has not passed Windows Logo testing...” appears, click on “Continue Anyway”.



6. Click on the “Finish” button to complete the driver installation.



The plotter / engraver can now be used. You can sign in with your user account.



## 7. Windows 2000

1. During the installation of the plotter / engraver software the message window **“Digital signature not found”** appears.

Answer the question **“Do you want to continue the installation?”** with **“Yes”**.



2. At the end of the installation, you will be asked to restart your computer, click on **OK** to restart. Sign in with your administrator account.
3. Connect the plotter / engraver to your computer and switch it on.
4. The message window **“Digital signature not found”** will appear again. Answer with **“Yes”**.

The plotter / engraver can now be used. You can sign in with your normal user account.